



GENERAL INFO

HIGH CAPACITY FILTER HOUSING

MaxiPlus™ Filter Housings

The Puretec MaxiPlus™ filter housings offer the versatility to meet all of your large-capacity filtration needs, including high-flow and heavy sediment applications. The extra large housings allows for greater cartridge capacity, reducing the number of vessels required for high flow-rate applications. Sumps are constructed of durable reinforced polypropylene and are available in both 10" and 20" lengths.

The Puretec MaxiPlus™ housings are compatible with a broad range of chemicals. They accept a wide variety of 4½" diameter cartridges in either 10" or 20" lengths.

HOUSING SPECIFICATIONS AND PERFORMANCE DATA

Model Numbers	Size inches	Connection	Description	Flow (Lpm)	Min/Max Pressure	Dimensions
MP100	10"	1" (25 mm)	Filter housing with grey bowl	80	0 - 520 kPa	343 mm x 185 mm
MP100B	10"	1" (25 mm)	Filter housing kit with grey bowl <i>Includes spanner wrench and mounting bracket</i>	80	0 - 520 kPa	343 mm x 185 mm
MP200B	10"	1½" (40 mm)	Filter housing kit with grey bowl <i>Includes spanner wrench and mounting bracket</i>	85	0 - 520 kPa	353 mm x 185 mm
MP200	10"	1½" (40 mm)	Filter housing with grey bowl	85	0 - 520 kPa	353 mm x 185 mm
MP300B	20"	1" (25 mm)	Filter housing kit with grey bowl <i>Includes spanner wrench and mounting bracket</i>	160	0 - 520 kPa	604 mm x 185 mm
MP300	20"	1" (25 mm)	Filter housing with grey bowl	160	0 - 520 kPa	604 mm x 185 mm
MP400	20"	1½" (40 mm)	Filter housing with grey bowl	180	0 - 520 kPa	613 mm x 185 mm
MP400B	20"	1½" (40 mm)	Filter housing kit with grey bowl <i>Includes spanner wrench and mounting bracket</i>	180	0 - 520 kPa	613 mm x 185 mm

^10 year warranty is 1 year parts and labour, plus 9 years parts only. Pressure + Temperature ratings mean housings must be protected from extremes above and below. This includes freezing, vacuum, overnight pressure creep + water hammer.

FEATURES & BENEFITS

- High capacity filter housings for flow rates up to 180 Lpm
- Features double O-ring seals for maximum durability
- Ribbed design provides a robust housing for years of troublefree service
- Compact and economical, ideal for duplex systems
- Wide variety of cartridge replacement available
- Available in 10", 20" heights and connection sizes of 1", 1½".
- Internal and external use to suit different applications
- 10 Year Warranty

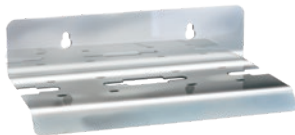
MATERIALS OF CONSTRUCTION

- Housing Polypropylene
- Cap Polypropylene (HFPP)
- Button Assembly 300-series Stainless Steel, EPDM and Polypropylene
- O-Ring Buna-N
- Maximum Temperature 52°C
- Maximum Pressure 520 kPa
- Colour Black head / Grey bowl

HOUSING SPARE PARTS



MPBK-G



MPBK2-G



MPOR-G



MPSP-G



CS02

Ordering Code	Description
MPBK-G	Single housing bracket, suits MP series housings
MPBK2-G	Twin housing bracket, suits 2x MP series housings
MPOR-G	O-rings, suits Grey MaxiPlus™ series housings (2x O-rings included)
MPOR-SQ	Square seal, suits old blue style MaxiPlus™ series housings
MPSP-G	Spanner, suits MP series housings
CS02	Joins two MaxiPlus 4.5" diameter cartridges

