

# UNILIFT AP 35B & 50B

HEAVY DUTY, SUBMERSIBLE STAINLESS STEEL GREY WATER PUMP



## WATER SOURCE



Storm/  
Grey Water

## APPLICATION



Storm/Grey  
Water Handling



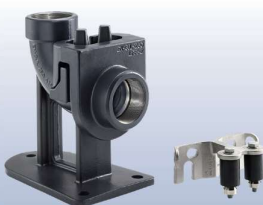
UNILIFT AP 35B  
SCAN THE QR CODE  
TO LINK TO GRUNDFOS  
PRODUCT CENTER



UNILIFT AP 50B  
SCAN THE QR CODE  
TO LINK TO GRUNDFOS  
PRODUCT CENTER

The Grundfos UNILIFT AP 35B and AP 50B are heavy duty, submersible pumps of stainless steel and composite construction, which are ideal for handling dirty stormwater runoff, domestic wastewater from bathroom basins or showers and fibrous laundry wastewater.

- **Highly corrosion resistant** - Constructed of high quality industrial grade components. All internal parts are manufactured from 304 stainless steel
- **Handle very dirty water with ease** - Can both easily pump large particles in stormwater run off or material fibres in laundry grey water
- **Easy installation – plug & pump** - Connect the pump outlet to the pipework, plug into a power outlet and you're ready to pump
- **Simple cleaning and maintenance** - Features quick release clips allowing easy dismantling of the pump body for cleaning or unblocking. AP35B & 50B can be permanently installed on an auto-coupling device for trouble free maintenance.



UNILIFT AP 35B

UNILIFT AP 50B

## PUMP SIZING

	UNILIFT AP 35B 50.06	UNILIFT AP 35B 50.08	UNILIFT AP 50B 50.08	UNILIFT AP 50B 50.11	UNILIFT AP 50B 50.15
	50 mm pipework 2.5 l/sec flow rate	50 mm pipework 3.0 l/sec flow rate	50 mm pipework 3.0 l/sec flow rate	50 mm pipework 4.0 l/sec flow rate	50 mm pipework 4.5 l/sec flow rate
Vertical Height	Maximum Horizontal Pipe Length				
10 m					30 m
9 m				11 m	44 m
8 m				29 m	59 m
7 m		30 m		47 m	73 m
6 m	19 m	60 m	14 m	64 m	88 m
5 m	61 m	89 m	44 m	82 m	102 m
4 m	102 m	119 m	74 m	101 m	116 m
3 m	143 m	149 m	103 m	118 m	131 m
2 m	185 m	179 m	133 m	136 m	145 m
1 m	226 m	209 m	163 m	154 m	160 m

Flow based on at least 1 m/sec velocity

## MAXIMUM PARTICLE SIZE

UNILIFT CC / KP	UNILIFT AP 12	UNILIFT AP 35 & AP 35B	UNILIFT AP50 & AP50B
10 mm	12 mm	35 mm	50 mm

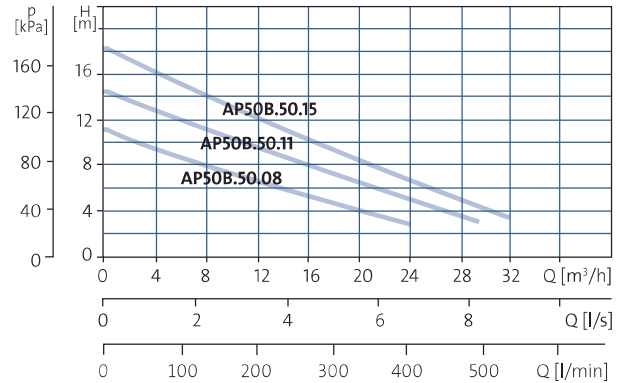
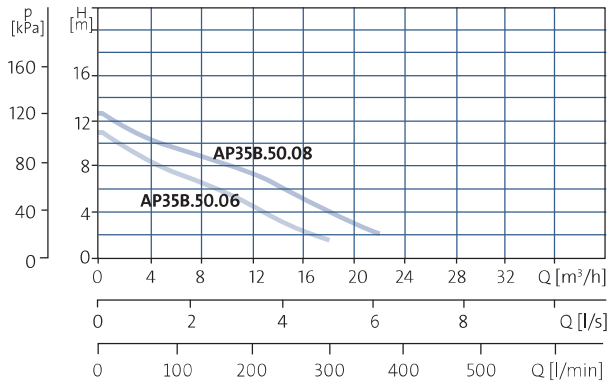
## PROTECTION & CONTROL\*

	UNILIFT AP 35B	UNILIFT AP 50B
Auto Start/Stop by Float Switch	✓	✓
Non-Return Valve	✓	✓
Overheating Protection with Automatic Restart	✓	✓
Auto Coupling Option	✓	✓

\*For full explanation of Protection and Controls see page 65-66

# TECHNICAL & PERFORMANCE DATA

## PERFORMANCE CURVE



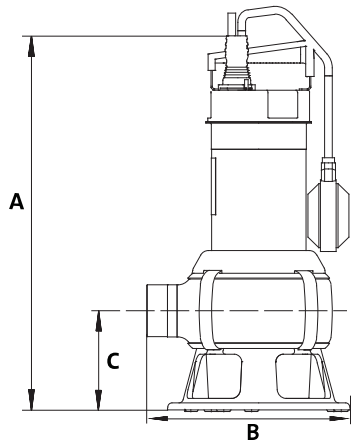
## OPERATING CONDITIONS

Liquid Temperature	0°C to +40°C
Max. Particle Size	AP 35B (35 mm) AP 50B (50 mm)
Max. Installation Depth	7 m
Minimum Pumping Level	Down to 270 mm
pH value of pumped liquid	4 to 10

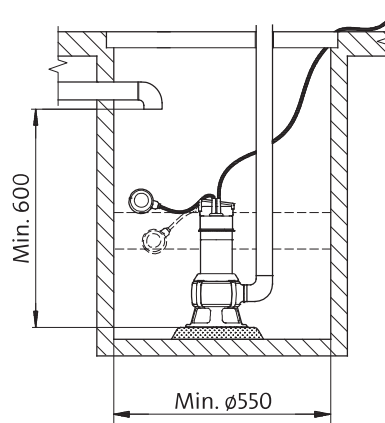
## TECHNICAL DATA

Power Supply Voltage	Single Phase: 220-240 Volt, 50 Hz Three Phase: 380-400 Volt, 50 Hz
Power Supply Cable	Single Phase: 10 m with plug Three Phase: 10 m hard wired
Enclosure Class	Suitable for submerged installation (IP68)
Approvals and Markings	C-Tick Compliance.
Impeller Type	Vortex

## PHYSICAL ATTRIBUTES



## MINIMUM PIT DIMENSIONS UNILIFT AP35B & AP50B



Model	Motor Power P2 (kW)	Connection Outlet	Dimensions (mm)			Weight (kg)
			A (h)	B (w)	C (Outlet)	
UNILIFT AP 35B.50.06.A1 V	0.66	2" Female	443	234	116	10
UNILIFT AP 35B.50.08.A1 V	0.71	2" Female	468	234	116	12
UNILIFT AP 50B.50.08.A1 V	0.74	2" Female	468	234	116	10
UNILIFT AP 50B.50.11.A1 V	1.10	2" Female	468	234	116	10
UNILIFT AP 50B.50.15.A1 V	1.50	2" Female	468	234	116	10
UNILIFT AP 50B.50.11.3 V	1.31	2" Female	468	234	116	12
UNILIFT AP 50B.50.15.3 V	1.50	2" Female	468	234	116	12